



# WELCOME TO OUR SCHOOL!

## INDUCTION EVENING FOR NEW PARENTS

2019 -2020



# EDUCATION IN KING'S CLIFFE

- Started in 1688 – Richard Wildbore left an endowment of £5 per annum for a suitable person to instruct eight boys in writing who came from the poorest parents in the parish.
- Two Charity Schools opened in Church Street:
  - First – 1727 Reverend William Law – education and full clothing of 14 poor girls of King's Cliffe to be instructed in reading, knitting and useful needlework.
  - Second – 1745 Mrs Elizabeth Hutcheson – education and full clothing of 20 poor boys of King's Cliffe to be instructed in the 3Rs.
  - 1753 the Law and Hutcheson charities were joined
- 1870s, the Law and Hutcheson Trustees purchased Park Street site to provide separate school rooms for boys and girls. The Endowed School opened on 13th January 1873.
- February 2017 we moved into our new school building.

# SCHOOL ETHOS AND VALUES

## Mission Statement:

We strive to ensure that all our children 'grow a love for learning' and experience success on a daily basis.

## Ethos

Here at King's Cliffe Endowed we strive to ensure that all our children 'grow a love for learning' and experience success on a daily basis. We work hard to excite our children in their learning and every opportunity is taken to grasp the chance to be highly innovative, imaginative and inspirational.

Our aim is to create a positive learning experience for every individual, which challenges and encourages children to be self-assured in expressing their thoughts and question their learning. Our wish is for all our children to become life-long learners by providing them with the skills and knowledge that enable them to

**Growing a Love for Learning**

be  
Va  
Va  
school community and endeavour to provide a positive and inclusive environment. Our School Rights underpin the values that we live, work and play by. In our school we all have the right to:

- Feel and be safe
- The right to learn
- The right to be treated with respect

We invite all our children on a journey to discover their own values and give them time to reflect on how their values affect those around them. Everyone in our school matters; therefore, we are constantly looking for ways in which to support one another in developing a sense of self-worth and know what it is to experience the joy of success.

# ARRANGEMENTS FOR ENTRY

## Before September:

- Transitions sessions – **Tuesday 25th June (pm), Tuesday 2nd July (pm) and Tuesday 9th July (am)**

## From September:

Home visits – from **Wednesday 4th September**

## Week 1:

**Thursday 12th September** - staggered entry mornings only (youngest first)

**Friday 13th** - Youngest children and some middle age group

**Monday 16th** - Youngest children and all middle aged group

**Tuesday 17th** - all children

**Wednesday 18th** – all children

## Week 2:

**Thursday 19th to Tuesday 24th September** – all children morning with lunch

## Week 3:

**From Wednesday 25th September** - all children – full time.

# TRANSITION AND WHOLE SCHOOL EVENTS

Afternoons of Tuesday 25th June and Tuesday 2nd July are 1.30-3.00pm.

Parents are welcome to stay during these sessions, although please do not feel obliged to do so as many parents in the past have found it to be more beneficial to their child if they leave them.

Whole school move up morning – Tuesday 9th July 9.30 – 11.30am.  
We ask parents to leave children for this transition morning.

Mrs Bowyer will be doing a tour of the school for parents at 9.30am.

# THE SCHOOL DAY

School gate opens at 8.45am and school begins at 8.55a.m.

We are happy for you to bring your child into school each morning and settle them in during the first few weeks. At 9am the tambourine shaking will indicate when registration is about to begin and the children need to come and sit down ready for the registration and this is the cue for parents to exit the classroom via the door to the outside area.

Break time is 10.30 – 10.45 am

Lunchtime is from 12.00- 1.15pm.

School closes each day at 3.25pm and you will be able to pick your child up from outside the gate to the Foundation Stage outside area.



# BREAK TIMES AND LUNCHES

At break times all children have access to fruit. It is possible to order milk for your child to drink at this time also. Milk is free to all children under five years and needs to be ordered separately on line. Information on how to do this is contained in your welcome pack.

All children in Foundation Stage and Key Stage 1 are currently eligible to have a free school meal provided in school. This needs to be ordered via the website once you have received your log in details. There is a choice of vegetarian, main meal and sometimes a jacket potato, soup or a packed lunch. All meals are accompanied by water or milk, bread, fruit and a dessert.

All children eat their lunch in the hall with the other children. Foundation children start lunch at 12pm and are joined first by the pre-school children and KS1 then later by the older children. Children who do not wish to have lunch provided by school can bring a packed lunch from home which is stored in the classroom prior to lunch time. This is also eaten in the hall alongside their friends. As a healthy eating school we do operate a healthy lunch box policy we do encourage a healthy balanced lunch and do not allow the inclusion of fizzy drinks , bars of chocolate or sweets in lunch boxes.



# HOME VISITS

These will take place during the first week of term when the children are not in school (4th September onwards). Please book your appointment with Mrs Yarland this evening, before you leave.

During the visit we will bring an information booklet about school for you, your child's first school reading book and reading record book and an activity for your child to complete with the Learning Support Assistant during the visit. Please take this opportunity to talk about anything that you or your child may be worried about starting school or likewise to share your child's interests and hobbies with members of the foundation stage team so we can build this into their learning wherever possible.



# PREPARING YOUR CHILD FOR SCHOOL

In preparation for your child starting school in September we would ask that you work with your child over the summer holidays so that they are able to do the following tasks independently upon starting school. If your child has a specific medical or other need that would mean these are not possible please mention them to Mrs Yarland or Mrs Bowyer so that we can work together in helping your child succeed in these areas.

1. Using a knife, fork and spoon at lunchtime so they can feed themselves independently.
2. Undress and dress themselves again. We will of course help with those tricky top buttons, but it is important that your child can get themselves changed independently for P.E. and forest school sessions.
3. Using the toilet, wiping themselves clean and washing their hands.
4. Wiping their own nose and managing any other hygiene needs.
5. Using their voice to express an opinion or need.

# WHAT YOUR CHILD NEEDS IN SCHOOL EVERY DAY

- P.E. kit – this consists of a school logo T-shirt (red) black shorts and black plimsoles. Outdoor P.E. is optional and consists of a school logo hoodie and black jogging trousers
- Water bottle – clearly named. We encourage the children to refill their water bottles themselves throughout the day so it needs to be one the child can open themselves. We do not allow cordial or fruit juices in the classroom.
- Book bag – containing reading record and reading book. As the year progresses the children will also have a library book and learning journal.
- Coat/hat/gloves/scarf/sun hat – in foundation stage we access the outdoor area all year round so the children need to have suitable clothes at all times.
- Two pairs of wellington boots – the children will keep one pair in the forest school shed and this year we have found it useful to have a spare pair that the children can access independently during outside play.

# THE FOUNDATION STAGE CURRICULUM.

This is planned and delivered under seven areas of learning:

## **Three Prime Areas**

### **Personal, Social and Emotional Development**

The children will learn about how to manage their emotions and beginning to understand the importance of sharing, turn taking and how to be a good friend.

### **Communication and Language**

Children will develop confidence in communicating and speaking, as well as improve their listening and understanding skills.

### **Physical Development**

We take part in a combination of Games, Dance, Gymnastics twice weekly and learn about the importance of a healthy lifestyle. Children will participate in yoga sessions in the spring term and Maypole dance practice in the summer term. They will learn about spatial awareness and taking risks.

# THE FOUNDATION STAGE CURRICULUM.

## Four Specific Areas

### **Mathematics**

Children will learn to count, read and write numbers through stories, songs and games. They will also develop a growing understanding of shape, problem solving, time, money and measuring. Later in the year the children will also start learning skills such as adding, subtracting, sharing and doubling in order to prepare them for the key stage 1 curriculum.

### **Literacy**

Children will develop their reading and writing skills through daily phonic sessions and adult led activities. The children will also enjoy daily story times following a weekly book theme.

### **Knowledge and Understanding of the World**

We make sense of the world, finding out about the natural environment, looking at growth and decay, the wider world in comparison to their local environment. Also we will think about understanding similarities and differences between people and cultures and exploring the use of ICT.

### **Creative Development**

Imagination and creativity is explored through art, design technology, music, imaginative and role-play activities, as well as using a variety of tools and materials to make, construct design and build.

# ASSESSING CHILDREN'S LEARNING IN THE FOUNDATION STAGE

## Observations

We currently use an on line observation and assessment programme called Tapestry. Short and long observations are taken throughout the day every day by all of the adults involved., most of the time the children are totally unaware of this We take lots and lots of photographs to use for assessment and tracking purposes. We also use video clips to be able to watch, reflect on and assess a group of children at a later time.

## Group work and/or 1:1 sessions with an Adult

Every week there will be a different focus for adult led activities, based on what the children are currently learning.

## Can Do Activity

After the first term, the children will start having a can do activity which is an activity they can do independently every day. This is to promote independent learning and also to aid the eventual transition into key stage 1.

## Assessment

This is a continuous and ongoing process throughout the school year. During the children's first 3 weeks in school the children will be assessed in line with the new Government Baseline Testing Programme. They will be informally assessed during play, in line with the Foundation Stage Profile. This information will then be shared at the first parent's evening in October and acts as a useful benchmark for the children's learning ad progression throughout the year.

# PHONICS AND READING

The children's ability to blend and segment to write and read is continually assessed throughout the school year. The pace of learning in phonics is very fast and constant assessment and practise is required to ensure children have embedded previous understanding before we move on. Additional to phonics sessions the children will also have 1-2-1 with an adult a minimum of twice every week, in addition to daily reading in phonics and play.

During these focused times the children have the opportunity to independently choose their own reading book based on their interests. Therefore it is very important that your child reads at home every night in addition to reading in school.

Therefore, as parents, it is really important to be aware of how sounds and letters are taught in school, so that you can assist your child with reading and homework at home. If you use 'sloppy sounds' be assured your child will let you know!

For more information please look at the pure sounds video on the website.

<http://www.kingscliffeschool.co.uk/page/?title=Phonics&pid=236>

Other useful websites are:

<https://www.letterjoin.co.uk/>

<http://www.letters-and-sounds.com/>

<https://www.phonicsplay.co.uk/>

<https://www.foundationyears.org.uk/wp-content/uploads/2019/01/0778-What-to-Expect-When-2018.pdf>

# SCHOOL UNIFORM

## Foundation & KS1

- Gold polo T-shirt with school logo
- Red sweatshirt or cardigan with school logo
- Grey trousers, shorts, skirt or pinafore dress.
- Grey or white socks
- Red or grey tights
- Black school shoes

## PE Kit

- Black shorts
- Red round neck t-shirt with gold school logo
- Black plimsoles
- Winter – black sweatpants
- Red hoodie with school logo (optional)

## KS2

- White school shirt
- School tie
- Red knitted V-neck jumper or cardigan with the school logo.
- Grey trousers, shorts, skirt or pinafore dress.
- Grey or white socks
- Black school shoes.

## Forest school

On Forest School day children need to come to school wearing their forest school clothes as there is not an opportunity for them to change.

They will wear their normal gold polo T-shirt with black sweatpants or leggings. Shorts and dresses are not suitable for forest school.

# ENRICHMENT ACTIVITIES

The children in every year group have a minimum of three enrichment activities every year. These are always linked to their class topic and have a curriculum theme e.g. science, D&T, history etc. These will either be a trip out of school or specialists coming into school to lead workshops.

£35



# HOME/SCHOOL COMMUNICATION

## PARENT MAIL

- Curriculum Newsletters
- Weekly Newsletters
- Curriculum Jigsaw
- Book Bags, Parent Mail.
- Reading Record Books
- Achievement Crowns
- Tapestry observations
- Workshops
- Website
- Anomaly Screen

Induction Packs

# WEBSITE

<http://www.kingscliffeschool.co.uk>

**Governors' Newsletter**  
King's Cliffe Endowed School, Leicestershire

**Hello and Welcome**  
This is the fourth edition of our newsletter. I hope that the information therein provides, together with the huge wealth of resources on our website, an interesting read to our site this year of improving the communication between the governing body and the parents and carers of our school. We welcome your feedback, comments and ideas looking for ways to improve what we do.

**Ofsted**  
The Ofsted team are currently reviewing the school as part of the transition to two tier and new build. Parents are invited to provide feedback on the school's performance in the areas of: Quality of Education, Leadership and Management, and the School's Contribution to Society.

**Transition to Two Tier and New Build**  
Since our last Governor Update in January we have received Ofsted feedback on our performance in respect of the following areas:

**Learning and Teaching**  
The school has made significant progress in the areas of: Quality of Education, Leadership and Management, and the School's Contribution to Society.

**Extended school partnerships**  
**Willow Tree Playgroup**  
The school has made significant progress in the areas of: Quality of Education, Leadership and Management, and the School's Contribution to Society.

**Before and After School care**  
The school has made significant progress in the areas of: Quality of Education, Leadership and Management, and the School's Contribution to Society.

**Parents & Friends**  
The school has made significant progress in the areas of: Quality of Education, Leadership and Management, and the School's Contribution to Society.



**King's Cliffe Endowed Primary School**  
15th January 2016

**Dear Parents**  
Our school value of the fortnight is **INSPIRATION**. We have been thinking about the ways in which we can inspire our children and inspire them to be inspired. Please take time to talk to your child about how they can be inspired and how they can inspire others.

**The Week's Good News**  
We are very excited that Forest School will be starting in Foundation Stage next week. A big thank you to the PTA for donating the equipment and equipment. Foundation Stage parents will find a letter in your child's bag this evening.

**Year 5 had a fantastic clay day workshop making 'Tutor roses' and 'Tutor pots'.**

**What a talented group we have in our school. They look fantastic.**

**We are delighted that the Photos from the Christmas performance are now up on our school website, you will find it under the classmate section.**

**On the 26th January 2016 the whole school will be celebrating Chinese New Year 2016. We will be the year of the monkey and each class will have a workshop to order their new year zodiac.**

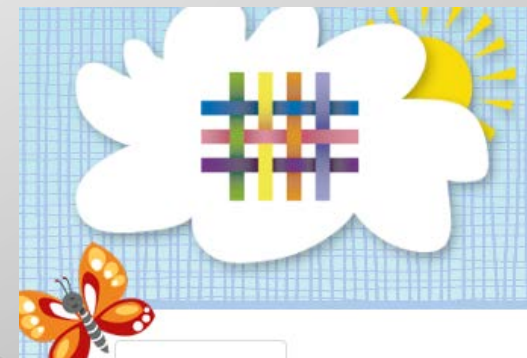
**Junior Cyber Champions**  
Our local Community Police Officers will be coming into school on Thursday 28th January where years 3-5 will be invited to 'Cyber Champions'. They will be there to help with the day which will focus on the following areas:

- Cyber Safety & Stranger Awareness
- Online Safety & Cyber Bullying
- Gaming Online

**After School Football**  
We have been approached by One Touch Football to run an after-school football club. The club will be open to all children in the school who are interested in playing football. The club will be open to all children in the school who are interested in playing football. The club will be open to all children in the school who are interested in playing football.

**Curriculum Overview for F.S.**

<p><b>Library</b></p> <p><b>Our aims are:</b> To provide a range of books for all children to read and enjoy. To provide a range of books for all children to read and enjoy. To provide a range of books for all children to read and enjoy.</p>	<p><b>Expressive Arts and Design</b></p> <p><b>Our aims are:</b> To provide a range of opportunities for children to explore their creativity and imagination. To provide a range of opportunities for children to explore their creativity and imagination. To provide a range of opportunities for children to explore their creativity and imagination.</p>
<p><b>Mathematics</b></p> <p><b>Our aims are:</b> To provide a range of opportunities for children to develop their mathematical skills and understanding. To provide a range of opportunities for children to develop their mathematical skills and understanding. To provide a range of opportunities for children to develop their mathematical skills and understanding.</p>	<p><b>Understanding the World</b></p> <p><b>Our aims are:</b> To provide a range of opportunities for children to learn about the world around them. To provide a range of opportunities for children to learn about the world around them. To provide a range of opportunities for children to learn about the world around them.</p>
<p><b>Personal, Social and Emotional Development</b></p> <p><b>Our aims are:</b> To provide a range of opportunities for children to develop their social and emotional skills. To provide a range of opportunities for children to develop their social and emotional skills. To provide a range of opportunities for children to develop their social and emotional skills.</p>	<p><b>Communication, Language and Literacy</b></p> <p><b>Our aims are:</b> To provide a range of opportunities for children to develop their communication and language skills. To provide a range of opportunities for children to develop their communication and language skills. To provide a range of opportunities for children to develop their communication and language skills.</p>
<p><b>Physical Development</b></p> <p><b>Our aims are:</b> To provide a range of opportunities for children to develop their physical skills and understanding. To provide a range of opportunities for children to develop their physical skills and understanding. To provide a range of opportunities for children to develop their physical skills and understanding.</p>	



# BEFORE AND AFTER SCHOOL CARE KALEIDESCOPE IN ACTION (KIA)

They offer :

**Breakfast Club** - each morning from 7.45p.m.

**After School Care** - from 3.30-6.00 p.m. Monday to Friday.

**Cost** - £4.00 per hour (concessions for siblings)

[www.kiaafterschool.co.uk](http://www.kiaafterschool.co.uk)

# PARENTS, FRIENDS ASSOCIATION (PFA)



# ANY QUESTIONS?

